

Customer :

customer

Customer part :

customer part

Comment :

Comment

S1=0.7

S2=11.94

Tmax=442

Tp S2=481.0

PI=0.06

HI=236

Sample =9107

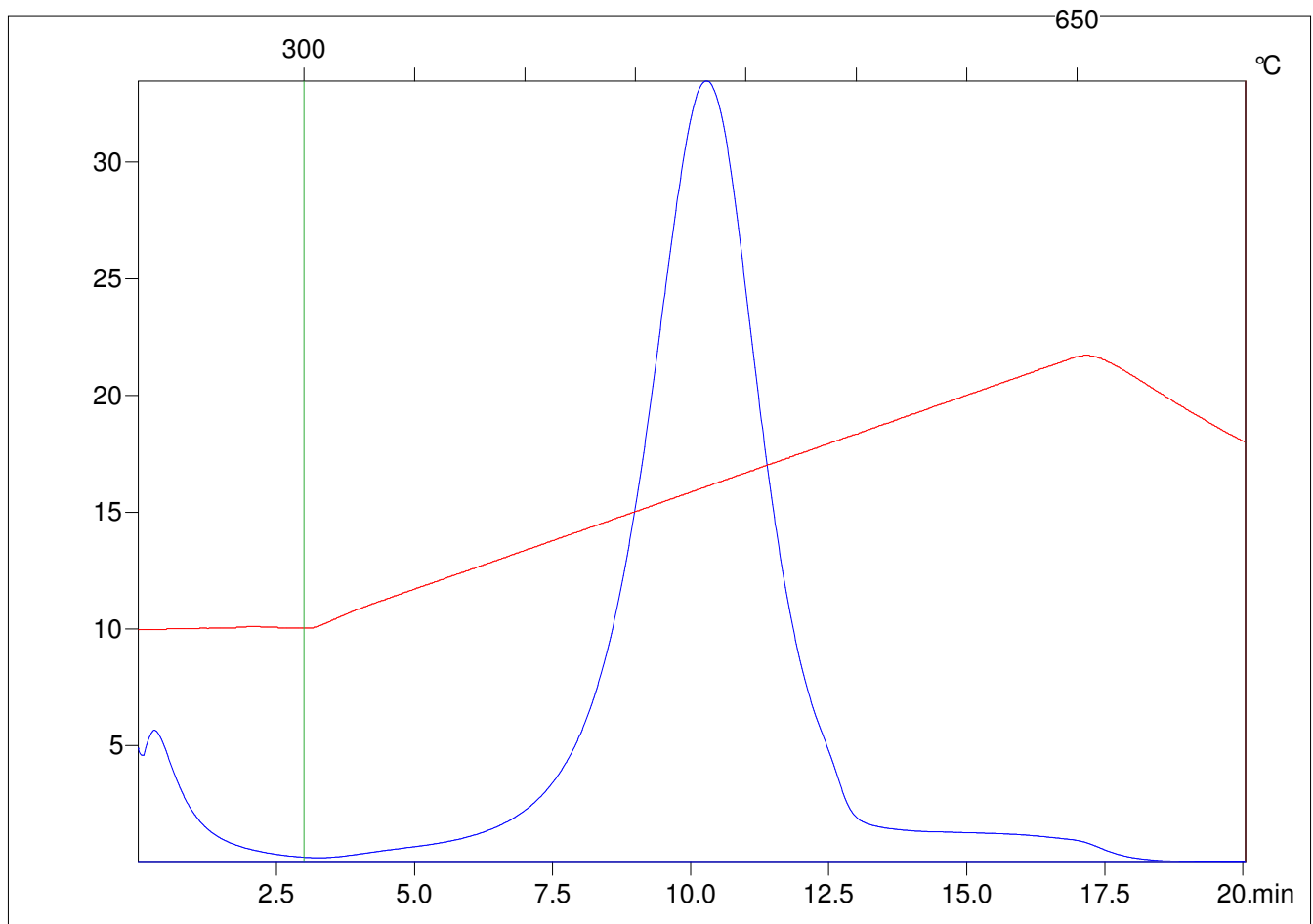
Method =Bulk Rock

Cycle=Basic

KFID(10*9)=1444

Qty =70.5

TOC=5.07



C:\VINC\PK3_1792\PK034.R00 : FID pyrolysis graphic

State

Pyro Status

Oxi Status